



## PRESSURE RELEASE ACCESS HATCH

Zefyr AH-PR

### Format

Ground or Roof

### Access

Single Flap (SF) or  
Double Flap (DF)

### Design

Curb Mounted

### Opening

Ranging from 300mm  
to 1000mm

### Loading

Pedestrian (standard) or  
Heavy Duty

### Seals

Double or Single

### Furniture

Screw Fix Locking  
Mechanism (standard),  
Hasp & Staple or  
Slam Latch

### Anti-Slip Lid

Chequer Plate, Anti-slip  
Paint, Anti-slip Tape or  
Embossed Lid

### Safety

None, Safety Grid or  
Magnetic Contact Switch

### Material

Aluminium, Stainless  
Steel or Steel Galvanised

### Finish

PPC / PVF2 to Zefyr  
Standard Colour / Gloss  
Lev

## System Design

### Features

- Curb mounted design – create any opening size
- Factory set pressure release catch – pressure differential to be confirmed on ordering
- Low profile mounting frame
- Available in Galvanised Mild Steel / Stainless Steel / Aluminium / Cromweld Stainless Steel.
- “Zeflok” – safety locking stay with padlock “stay-open” provision
- Comprehensive range of colours and finishes to all surfaces
- Spring assisted hinged lid suitable for one-man operation, in compliance with Manual
- Handling Operations Regulations 1992
- Re-settable locking mechanism
- Loading conforms to EN 124 – Class A15 / BS497 Class C – Pedestrian Loading
- Multi lid option

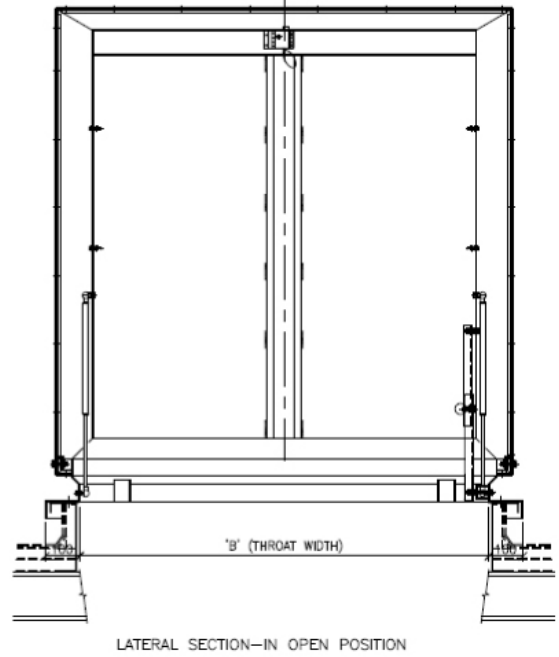
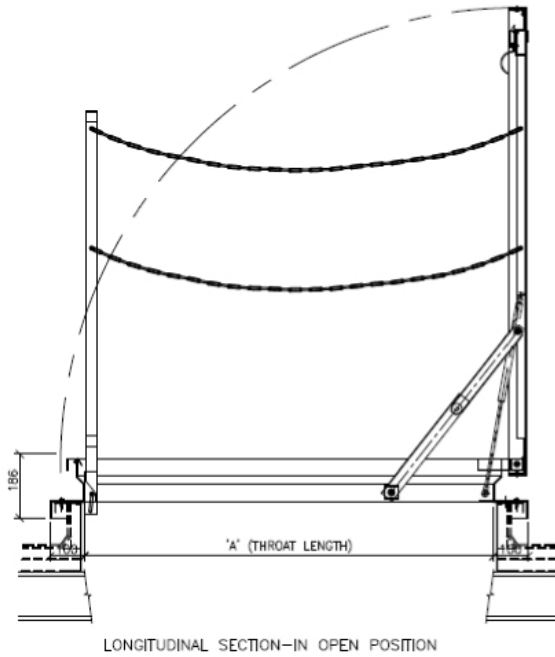
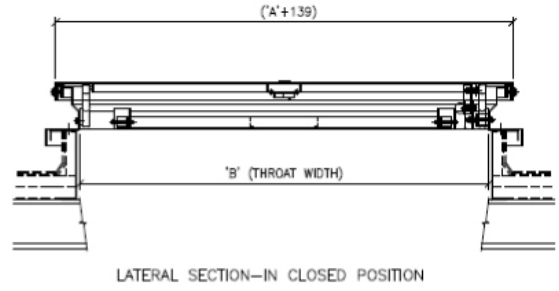
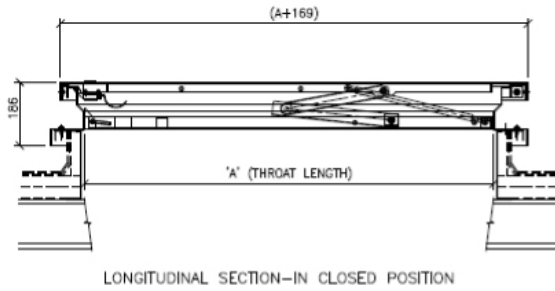
### Options

- Body mounted compression seals positioned to avoid damage
- Replaceable fine mesh air vents, fitted and concealed by the closed lid to prevent
- interference
- Combination safety grid / ladder extension with integral hand grip
- Anti-slip lid
- Embossed lid
- Magnetic contact switch for security
- Coating options include – polyester powder coat
- Heavy Duty Loading conforming to EN 124 – Class C250 / BS497 Class B
- Antibacterial coating finish

# Techniqual Data

Dimentions (mm)			Weights (kg)		
	A	B	Cover (safety grid)		
Model	Throat Length	Throat Width	Model	Aluminium	Steel
PR-AH-SF001	300	300	PR-AH-SF001	12	36
PR-AH-SF001	600	600	PR-AH-SF001	25 (+1.5)	75 (+4.0)
PR-AH-SF001	750	750	PR-AH-SF001	30 (+1.7)	90 (+5.0)
PR-AH-SF001	900	900	PR-AH-SF001	35 (+2.3)	105 (+7.0)
PR-AH-SF001	1000	1000	PR-AH-SF001	38 (+3.7)	114 (+8.0)

Standard clear opening dimensions for other sizes contact Zefyr



# NBS Specifications

## Zefyr Pressure Release Access Hatch System

\* Optional to complete / delete as appropriate

<b>Manufacturer</b>	Zefyr, Home Farm, Stockton Road, Abberley, Worcestershire, WR6 6AS T +44 (0) 870 600 1356 F +44 (0) 870 600 1356 E mail@zefyrgroup.com
<b>Loading</b>	* EN 124 – Class A15 / BS497 Class C / * EN 124 – Class C250 / BS497 Class B * other (refer to Zefyr)
<b>Configuration</b>	Fully assembled, tested and palletised.
<b>Format</b>	* Ground / Roof
<b>Clear Opening</b>	“A” x “B” - to be specified - hinges on “longest side”.
<b>Construction</b>	Fully welded construction
<b>Lid and Body</b>	* Aluminium / Mild Steel / 304 Stainless Steel / 316 Stainless Steel / Cromweld Stainless Steel / galvanised steel
<b>Seals</b>	* Single Seal * Double Seal
<b>Furniture</b>	* Screw fix locking mechanism fitted as standard. * Hasp and staple. Padlock supplied by others. * Slam latch with external “T-Bar” and internal release
<b>Lid Stay</b>	“Zeflok” – safety locking stay with padlock “stay-open” provision
<b>Anti-Slip Lid</b>	* Chequer plate / Anti slip paint / Anti slip tape / embossed lid
<b>Safety Grid</b>	* Safety grid designed to fold flat within the depth of the hatch when closed. * Supplied to suit
<b>Fixings</b>	* Supplied to suit
<b>Ground Details</b>	Recess to be formed by others
<b>Base Finish</b>	* Mill finish aluminium / Mill finish stainless steel / Mild steel galvanised after manufacture BS EN ISO 1461:1999 – standard.
<b>Colour Coating</b>	* Colour and finish PPC / PVF2 to Zefyr Standard Colour / Gloss Lev

zefyrgroup.com



Innovative Building Solutions for  
a Sustainable Environment